

# BILLENNIUM ARTICULATED RANGE

SPIDER LIFTS ON CRAWLER

B1570-A

B1890-A

B2190-A

B2490-A



ALMACRAWLER 

# BA-LINE

## BILLENNIUM ARTICULATED RANGE

Designed to ensure maximum efficiency and versatility in any working site, the new range of Articulated Spider Lifts combine cutting-edge technology with remarkable operational simplicity. Available with hybrid, full electric, or combustion engines, these spider lifts deliver top performance in any environment—indoors, outdoors, on slopes, or uneven terrain.

Progettati per garantire massima efficienza e versatilità in ogni contesto di lavoro, i nuovi Spider Lifts a braccio articolato uniscono la tecnologia più avanzata a una straordinaria facilità d'uso.

Disponibili con motorizzazioni ibride, full electric o termiche, questi spider lifts garantiscono massime prestazioni in ogni ambiente: indoor, outdoor, in pendenza o su terreno instabile.

**B2190-A**

**B1570-A**



### **Stabilizzatori a geometria variabile (B2490-A)**

Configurabili in più posizioni per garantire l'impiego anche in ambienti caratterizzati da spazi d'accesso limitati.

### **Variable Outriggers Configuration (B2490-A)**

Adjustable in multiple positions to allow setup even in confined-access environments.

### **Rotazione a 360° e oltre**

Tutti i modelli offrono rotazione torretta da 320° a 440° e rotazione cesto fino a  $\pm 90^\circ$ , per la massima libertà operativa

### **360° and beyond rotation**

All models feature turret rotation from 320° to 440° and basket rotation up to  $\pm 90^\circ$ , ensuring maximum operational freedom.

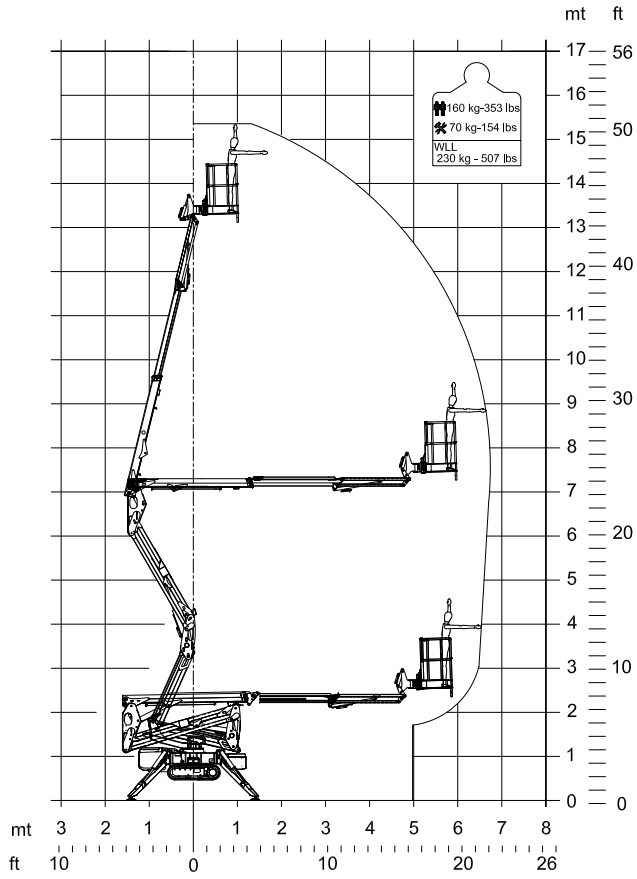


Technical data	B1570-A	B1890-A	B2190-A	B2490-A	Dati tecnici
Max working height	15,00 m	17,60 m	20,40 m	23,50 m	Altezza max di lavoro
Max working outreach	6,80 m (230 Kg)	8,50 m (120 Kg)	9,80 m (230 Kg)	11,50 m (230 Kg)	Sbraccio max di lavoro
Up & over clearance	6,20 m	5,30 m	8,80 m	11,00 m	Scavalcamento
Max load capacity	230 Kg	200 Kg	230 Kg	230 Kg	Portata massima
Cage rotation	160°	180°	160°	160°	Rotazione cesta
Turret rotation	360°	320°	360°	440°	Rotazione torretta
Gradeability	30%	30%	30%	30%	Pendenza superabile
Total weight	2000 Kg	2330 Kg	2850 Kg	3250 Kg	Massa totale
Controls	Electric hydraulics	Hydraulics	Electric hydraulics	Electric hydraulics	Comandi
Electric motor	220V - 2.2 kW	220V - 2.2 kW	220V - 2.2 kW	220V - 2.2 kW	Motore elettrico
Lithium battery	48V - 100 Ah	48V - 100 Ah	48V - 100 Ah	48V - 100 Ah	Batteria al litio
Hour counter	Standard	Standard	Standard	Standard	Contatore
Air/water plug	Standard	Standard	Standard	Standard	Pres a aria/acqua
Electric plug	Standard	Standard	Standard	Standard	Pres a elettrica
Extending tracks	Standard	Standard	Standard	Standard	Cingoli allargabili
Stabilizers self-leveling	Standard	Standard	Standard	Standard	Autolivel. stabilizzatori
Cable control	Standard	Standard	n. a.	n. a.	Filocomando
Radiocontrol	Optional	Optional	Standard	Standard	Radiocomando
Non-marking tracks	Standard	Standard	Standard	Standard	Cingoli antiraccia
Single Man Basket (85 cm width)	Optional	Optional	Optional	Optional	Navicella Monoposto (largh. 85 cm)

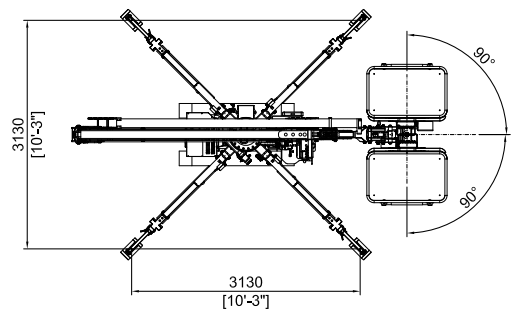
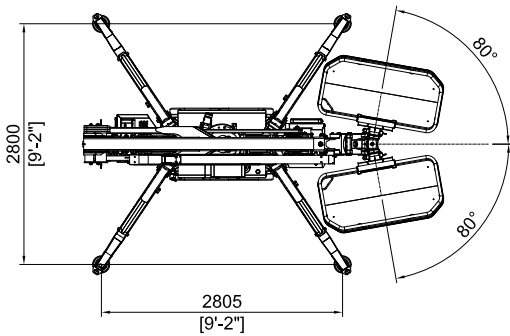
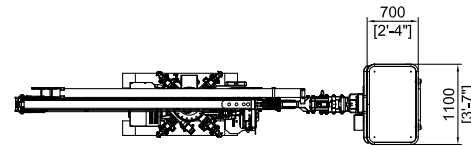
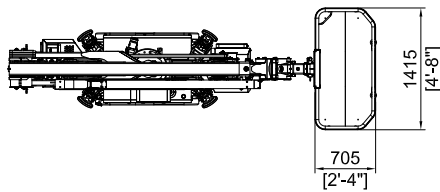
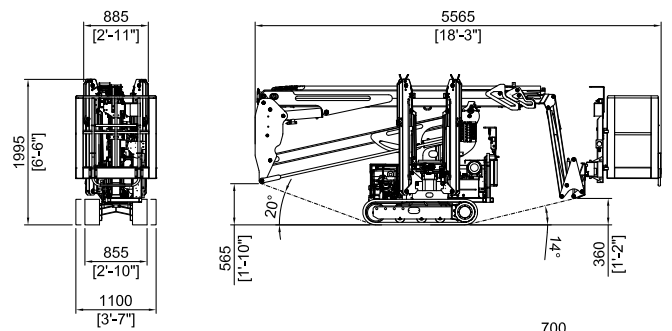
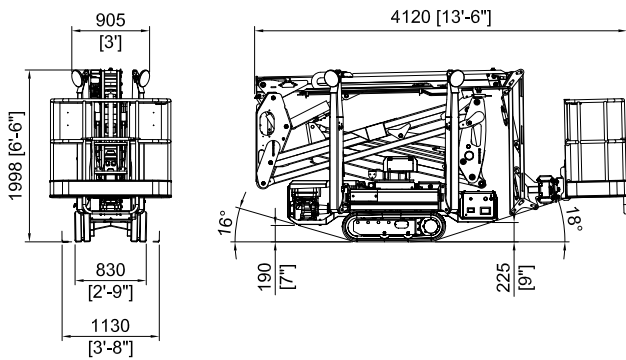
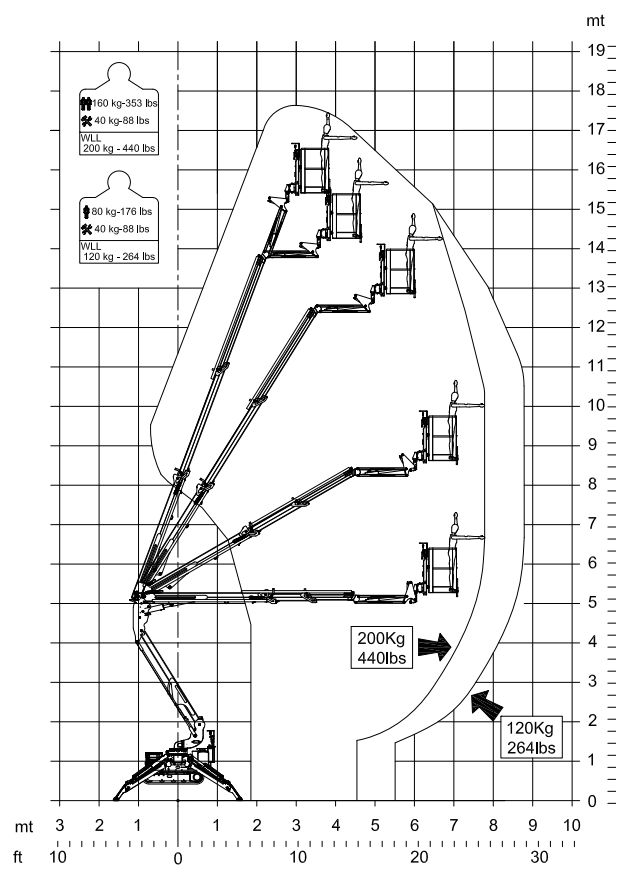
Version	ETS	LTH	ETS	LTH	EVO	LTH	BI ENERGY	EVO	BI ENERGY	Versione
Engine	Gasoline Honda GX390 / Diesel Hatz 1B40	Lithium Battery Pack 100 Ah-48 V	Gasoline Honda GX390 / Diesel Hatz 1B40	Lithium Battery Pack 100 Ah-48 V	Diesel Kubota Z602	Lithium Battery Pack 200 Ah-48 V	Diesel Kubota Z602 & Lithium Battery Pack 100 Ah Ah-48 V	Diesel Kubota Z602	Diesel Kubota Z602 & Lithium Battery Pack 100 Ah Ah-48 V	Motore



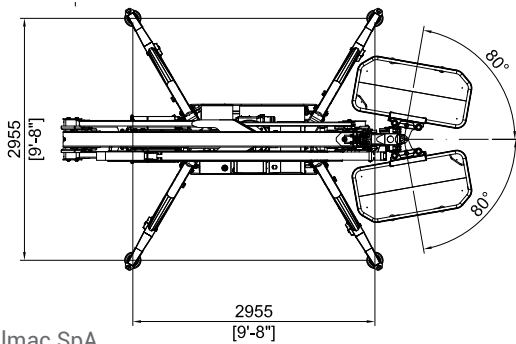
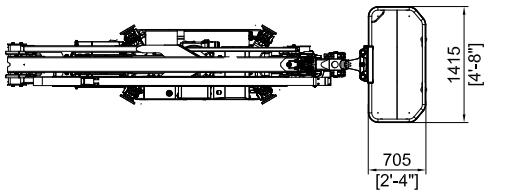
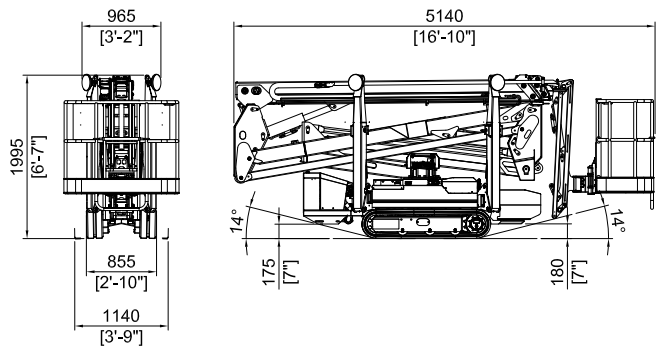
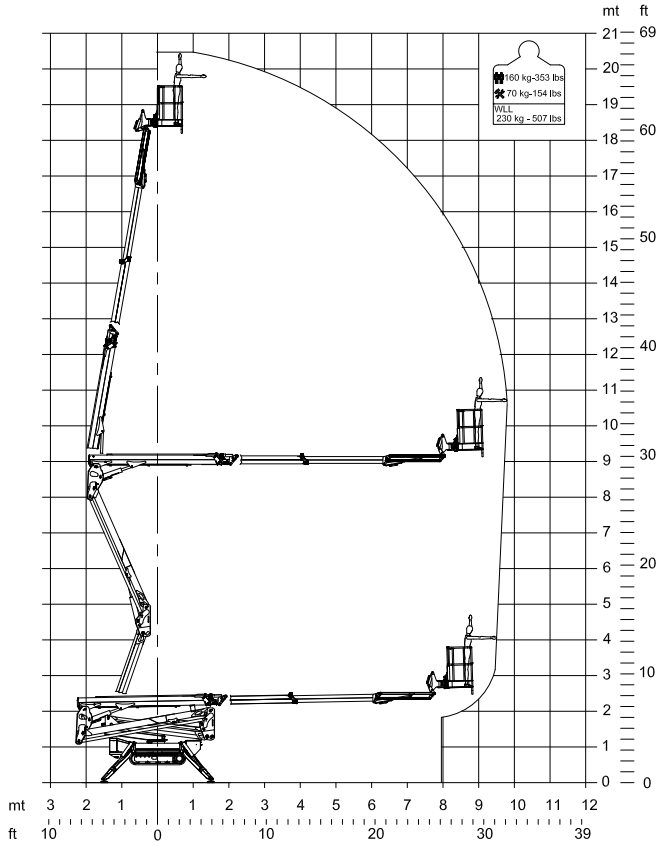
# B1570-A



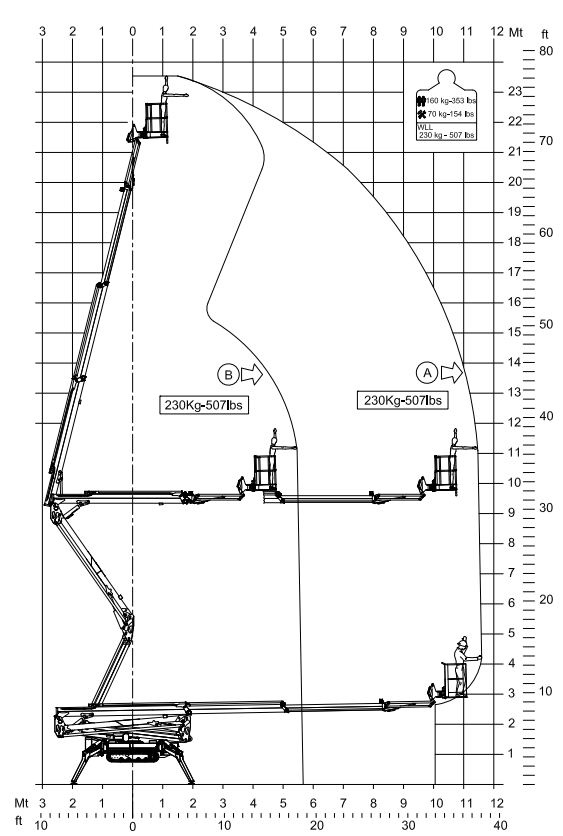
# B1890-A



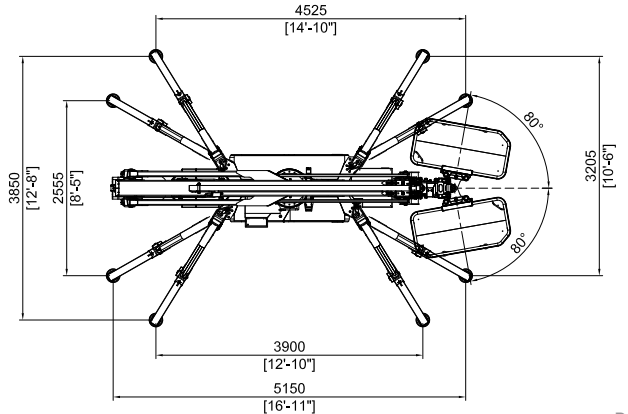
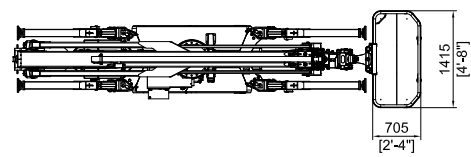
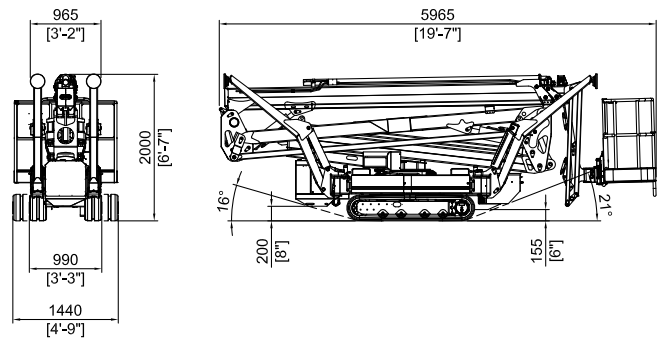
# B2190-A



# B2490-A



A: Stabilizzatori in posizione larga \ Wide-set stabilizers (117°)  
 B: Stabilizzatori in posizione stretta \ Narrow-set stabilizers (59°)



Almac SpA  
 Via Caduti sul Lavoro 1  
 46019 Viadana (MN) - ITALY  
 +39 0375 83 35 27  
 info@almac-italia.com  
 www.almac-italia.com

Rev.01