

JIBBI 1450

CRAWLER TELESCOPIC BOOM

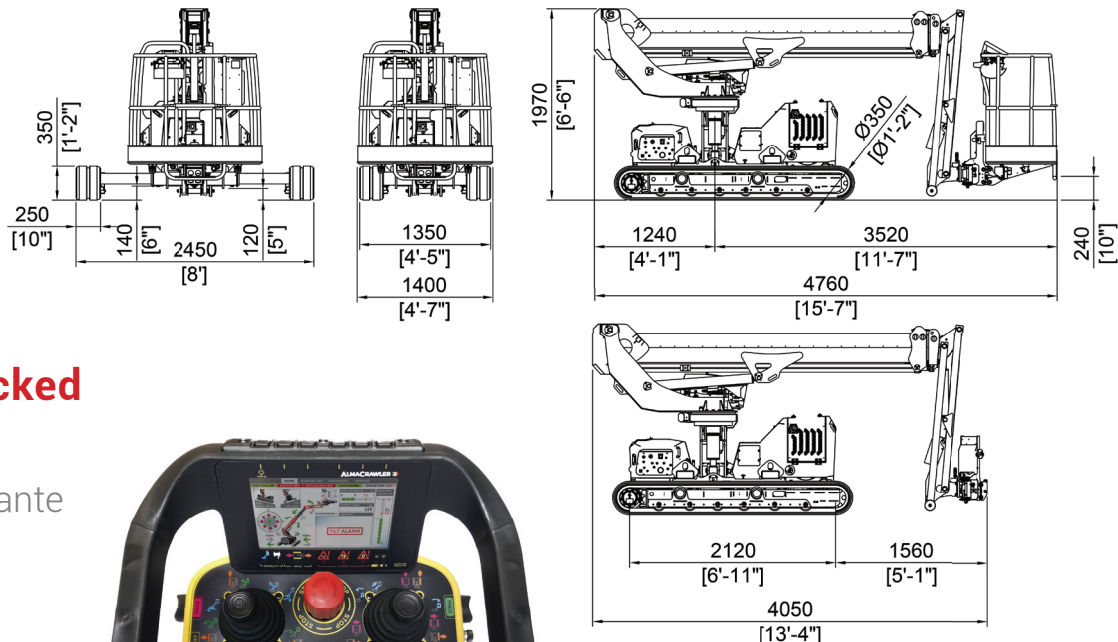


1450 EVO
1450 LTH



ALMACRAWLER

JIBBI 1450



Self-levelling tracked telescopic boom

Piattaforma autolivellante cingolata a braccio telescopico



Cable remote console by AUTECH
Console via cavo by AUTECH

New Dynamic Work
Performance (DWP by Almac)

Nuovo Dynamic Work
Performance (DWP by Almac)

IDS

INTEGRATED DRIVE SYSTEM
SINGLE USE OF THE JOYSTICK
USO SINGOLO DEL JOYSTICK



14,80 m

WORKING HEIGHT
ALTEZZA DI LAVORO

+/-70°

BASKET ROTATION
ROTAZIONE CESTA

220°

TURRET ROTATION
ROTAZIONE RALLA



DYNAMIC LEVELLING

15° LONGITUDINAL
15° LATERAL

Technical data

	JIBBI 1450	Dati tecnici
Max working height	14,80 m	Altezza massima di lavoro
Max height basket floor	12,80 m	Altezza piano calpestio
Moving height	7,40 m (230kg) - 9,10 m (140kg)	Altezza di traslazione
Max outreach (load 80 kg)	7,60 m	Sbraccio max (car. 80 Kg)
Max outreach (load 140 kg)	6,90 m	Sbraccio max (car. 140 Kg)
Max outreach (load 230 kg)	5,90 m	Sbraccio max (car. 230 Kg)
Rotation angle	+/- 110°	Angolo di rotazione torretta
Basket size	1,40 x 0,70 m	Dimensioni navicella
Basket rotation angle	+/- 70°	Angolo di rotazione navicella
Max basket capacity	230 kg	Portata massima in navicella
Length in stowed position (with detached basket)	4,76 (4,05) m	Lunghezza richiusa (navicella smontata)
Min width in stowed position	1,35 m	Larghezza minima richiusa
Medium working width	1,98 m	Larghezza media di lavoro
Max working width	2,45 m	Larghezza massima di lavoro
Min height in stowed position	1,97 m	Altezza minima richiusa
Longitudinal leveling	+/- 15°	Livellamento longitudinale
Lateral leveling	+/- 15°	Livellamento laterale
Max gradeability	25°	Pendenza massima superabile
Max side gradeability	25°	Pendenza laterale massima
Drive speed (fast)	2.50 km/h (EVO) - 2.00 km/h (LTH)	Velocità traslazione (rapida)
Security speed	0,40 km/h	Velocità sicurezza

Weights

	EVO	LTH	Pesi
Traffic load	2,41 kN/m2	2,41 kN/m2	Carico al suolo
Total weight	2806 kg	2870 kg	Peso totale

Power

	EVO	LTH	Potenza
Engine	3TNM-68 Yanmar Engine (Diesel) 12,5 kW - 17 HP	Lithium battery pack 300Ah-48V DC 4 kW	Motore

Extras - On Demand

- **Radio remote control**
Radiocomando
- **Non-marking tracks**
Cingoli antitraccia
- **Electric pump 220V 2,2kW**
Elettropompa 220V 2,2kW
- **Winch kit 200kg**
Kit verricello 200kg
- **Lubricant kit for arctic climate**
Kit Lubrificante per clima artico
- **Ultrasonic Anti-collision System**
Sistema Anti-collisione ad Ultrasuoni



UAS

ULTRASONIC ANTI-COLLISION SYSTEM

MYALMAC CONTROL PANEL



Simplify and centralize all after-sales activities management, as well as spare parts purchasing and warranty procedures.

Providing 24/7 access to all technical documents and tools for daily management.

Manage all your ALMAC products in one single online portal.

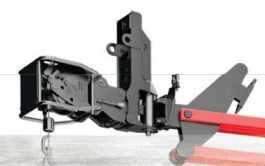
Basket size

Dimensioni navicella

Standard
1.4 m



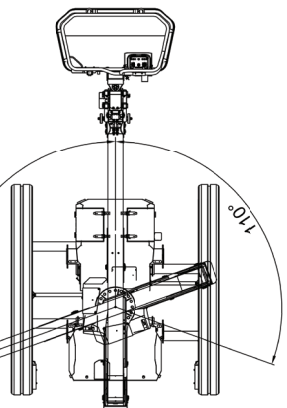
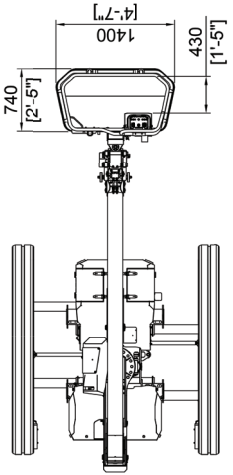
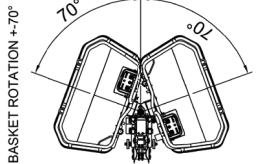
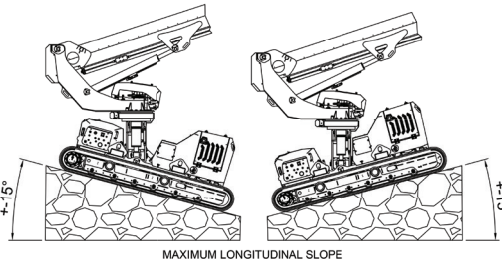
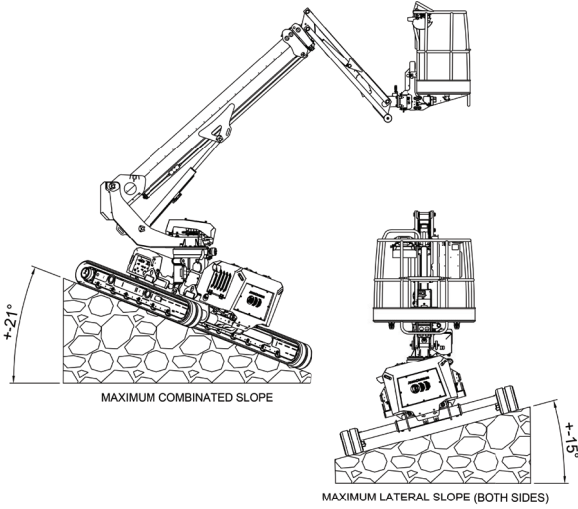
WINCH KIT
KIT VERRICELLO



Optional

ALMACRAWLER

JIBBI 1450



14.8m

MAX W.H.

230kg

CAPACITY

$\pm 15^\circ$

LONG. LEVEL

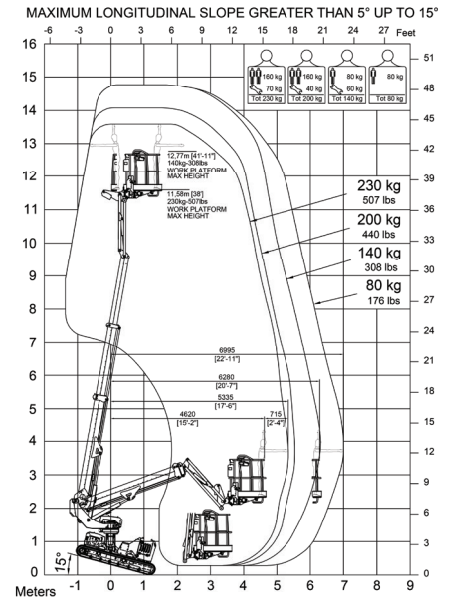
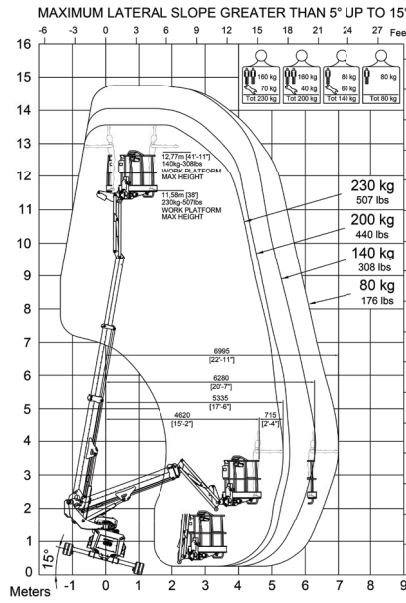
2.5km/h

SPEED

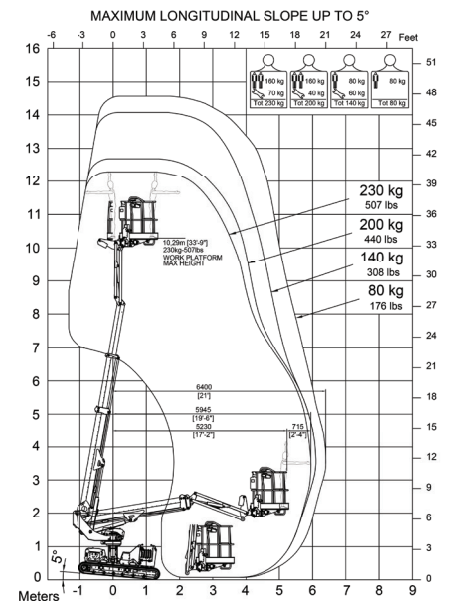
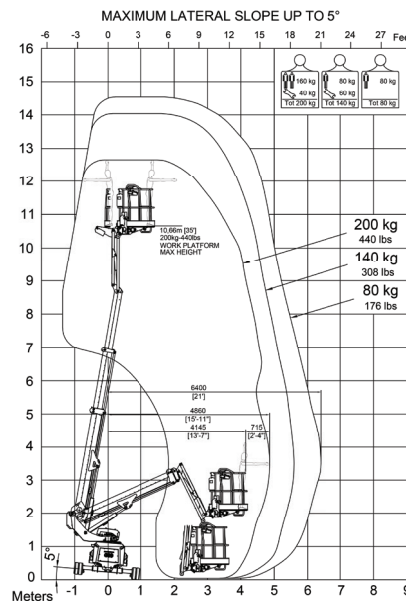
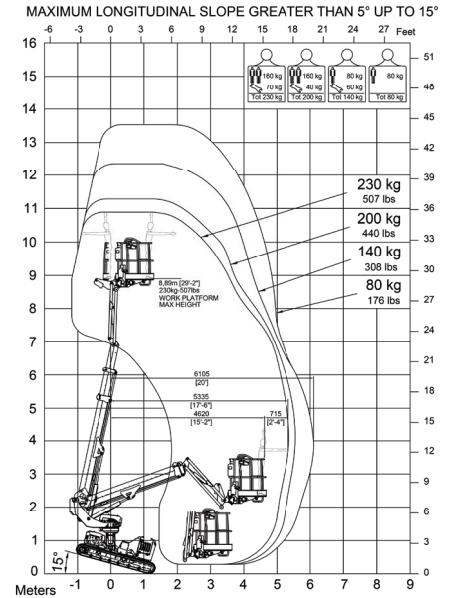
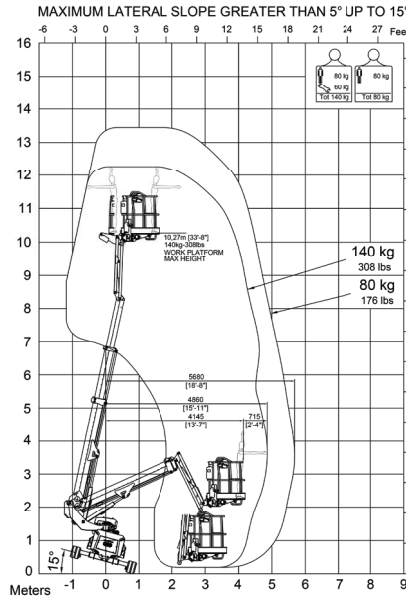
$\pm 15^\circ$

LATER. LEVEL

WORKING DIAGRAMS WITH FULL EXTENDED CARRIAGE (WIDTH 2450mm)



WORKING DIAGRAMS WITH MIDDLE EXTENDED CARRIAGE (WIDTH 1980mm)



Via Caduti sul Lavoro 1
46019 Viadana (MN) - ITALY
+39 0375 83 35 27
info@almac-italia.com

ALMAC GROUP

Rev.02

ALL DATA REPORTED IN THIS CATALOGUE ARE NOT BINDING. ALMAC SPA RESERVES THE RIGHT TO CHANGE SPECIFICATIONS WITHOUT PRIOR NOTICE.